



# TEST REPORT

TESTREPORT No : ETLR150202.0071


■ Applicant :

Company name	Puresphere Co., Ltd.		
Address	545 Yongsan-dong, Yuseong-gu, Daejeon 305-500, Korea		
Sample information	<p>■ Name :</p> <p style="text-align: center;"><b>Catalyst</b></p>	<p>■ Photograph</p> 	
	<p>■ Comment :</p> <p style="text-align: center;"><b>Purelyst MD-100</b></p>		
Laboratory environment	Temperature	( 21.7 ± 3.7 ) °C	Relative humidity ( 25 ± 4 ) %
Testing period	Feb 02 ~ 09, 2015		

■ Affirmation



Tested by  
Seoul Hee, Lee



Reviewed by  
Yeon Chan, Kang



ETL Inc tested the sample which was selected by applicant with following result.

Date of issue : Feb 09, 2015

\*Heavy metals

Items	Unit	Method	MDL	Result
Cadmium (Cd)	mg/kg	IEC 62321 : 2013, ICP-OES.	1	N.D.
Lead (Pb)	mg/kg		5	N.D.
Mercury (Hg)	mg/kg		5	N.D.
Hexavalent Chromium (Cr <sup>6+</sup> )	mg/kg	IEC 62321 : 2008, UV-VIS.	1	N.D.

\*Polybrominated biphenyls (PBBs)

Items	Unit	Method	MDL	Result
Monobromobiphenyl	mg/kg	IEC 62321 : 2008, GC-MS.	5	N.D.
Dibromobiphenyl	mg/kg		5	N.D.
Tribromobiphenyl	mg/kg		5	N.D.
Tetrabromobiphenyl	mg/kg		5	N.D.
Pentabromobiphenyl	mg/kg		5	N.D.
Hexabromobiphenyl	mg/kg		5	N.D.
Heptabromobiphenyl	mg/kg		5	N.D.
Octabromobiphenyl	mg/kg		5	N.D.
Nonabromobiphenyl	mg/kg		5	N.D.
Decabromobiphenyl	mg/kg		5	N.D.

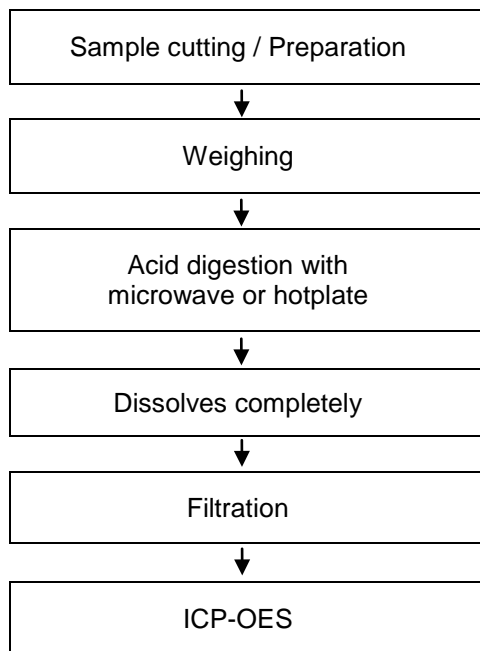
\*Polybrominated diphenyl ethers (PBDEs)

Items	Unit	Method	MDL	Result
Monobromodiphenyl ether	mg/kg	IEC 62321 : 2008, GC-MS.	5	N.D.
Dibromodiphenyl ether	mg/kg		5	N.D.
Tribromodiphenyl ether	mg/kg		5	N.D.
Tetrabromodiphenyl ether	mg/kg		5	N.D.
Pentabromodiphenyl ether	mg/kg		5	N.D.
Hexabromodiphenyl ether	mg/kg		5	N.D.
Heptabromodiphenyl ether	mg/kg		5	N.D.
Octabromodiphenyl ether	mg/kg		5	N.D.
Nonabromodiphenyl ether	mg/kg		5	N.D.
Decabromodiphenyl ether	mg/kg		5	N.D.

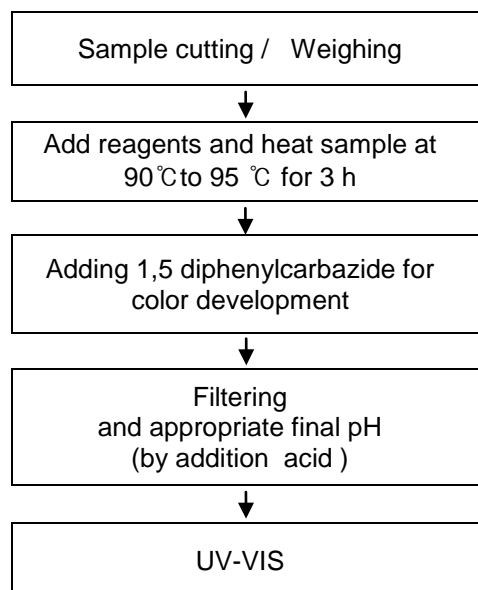
\* Note : MDL = Method detection limit, N.D. = Not detected

■ Flow chart :

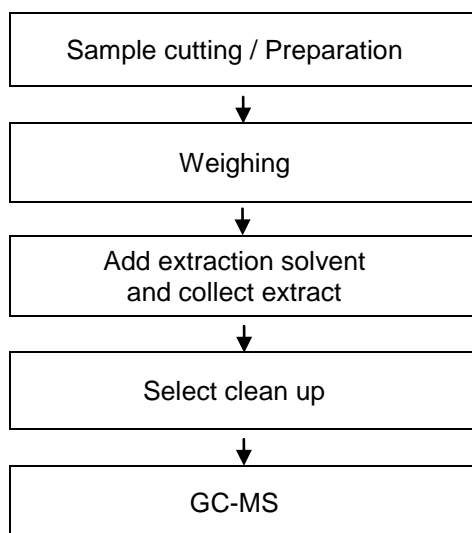
**\* Pb, Cd, Hg**



**\* Cr<sup>6+</sup> - Nonmetal**



**\*PBBs, PBDEs**



- E N D -